

PRESENTATION

Epicentre PARIS



20
23



THE CONTEXT IN FRANCE



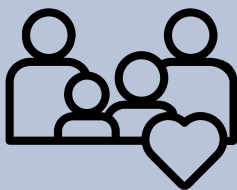
FAITH

- 56% of the population declare themselves atheist, agnostic or indifferent to faith.
- 32% of the population declare themselves to be Catholic, of which 19% do not practice their faith.
- Only 14% of the population practice their religion at least once a month.
- Evangelicals represent 1% of the population.



EVANGELICAL CHURCHES

- Average size: 35-50 people
- In Paris (pop. 2.5 million): out of 74 protestant churches, **90% rent their premises.**
- Churches are increasingly leaving city centers because of real estate prices, thereby losing their influence and visibility.



BROKEN FAMILIES

- 45% of marriages end in divorce.
- 50% or more children are born outside the context of marriage.
- 28% of children live with only one parent.
- 33% of single-parent families live below the poverty line.

REBUILD & RESTORE THE CITY

THE CALL TO PARIS

« *Rebuild and restore the city of their ancestors that lies in ruins* » (Nehemiah)

It is to answer this call that Frederic and Vanessa Dalais arrived in Paris in 2009 with their two young boys. Frederic found a job and they started the church in their living room with a vision: "To know Jesus and make Him known, in Paris and from Paris to the ends of the earth, for the glory of God".

Their goal is twofold:

- To extend the Kingdom of God in Paris through the authentic expression of the Gospel, through preaching and through discipleship.
- To build a base church that will act as a launching pad for France and Europe.

Over time, the work grew, a third son was born, and Fred and Vanessa's living room became too small. A first location was rented and this urban church chose the name La Cité (the city, a reference to Psalm 48).



CHURCH LEADERS



**FRED & VANESSA
DALAIS**



**LA CITÉ
ELDERSHIP
TEAM**

THE CALL CONTINUED...

REBUILD &
RESTORE
THE CITY

In 14 years, despite the hostilities of this secular city and its transient nature over the years, the church has continued to grow and has had to **move 8 times**.

La Cité has welcomed and equipped hundreds of people from around the world. Many come to faith for the first time, are baptized, discipled, find purpose and meaning in their lives and experience healing or restoration.

Since its third year La Cité has also hosted conferences for pastors and churches from France, Europe and beyond, in collaboration with New Covenant Ministries International ([ncmi.net](https://www.ncmi.net)).

<https://www.egliselacite.com>

<https://ncmi.net>

<https://www.ncmieurope.net>





PARIS EPICENTRE

AN HISTORIC OPPORTUNITY

Today, La Cité has an historic opportunity: to acquire a central location in Paris to spread the Gospel and have a more effective and lasting impact on the community, cities and nations. **This is the Paris Epicenter project!**

This building, consisting of a 350-seater multi-purpose hall and several meeting rooms, would allow:

- The church to **grow to 1,500 members**, gathered in several services each weekend;
- The ability to host and thereby **facilitate discipleship and equipping events for churches** and organizations in Paris, France and Europe;
- **Greater impact in our city by serving its needs**, including a family center that provides marriage and parenting education and assistance;
- The creation of a **hub, a meeting point between the community and church members** through a coffee shop, coworking space, cultural activities, and long-term educational services.

2 FAVORABLE FACTORS:

This building is being **sold at half** its commercial value because it is limited exclusively to social, religious and cultural activities. This legal limitation will end in 2057, at which time its value will double.

The current owners, Catholics, want to **maintain a Christian presence** in the building. They have even agreed to a multi-year payment plan to facilitate the sale.

THE PROJECT NUMBERS

This project has a total cost of **7,994,250 €** (including purchase price, notary and agent fees, taxes and estimated renovation costs).

PARIS EPICENTRE PROJECT	VALUE
Purchase price	6 750 000 €
Taxes, transfer duties, agent fees etc.	844 250 €
Estimated renovation costs	400 000 €
TOTAL PROJECT COSTS	7 994 250 €

TERMS OF PAYMENT



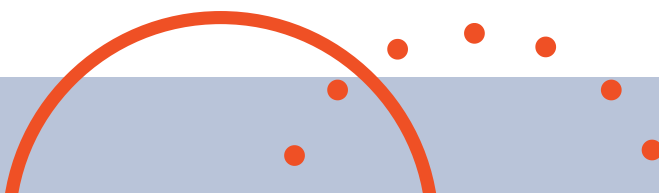


A multi level facility in a high density residential area in central Paris, highly accessible to the public transport system, across the road from a popular park and municipal sports centre. The building has the potential for multiple activities and meeting halls, restaurants/coffee shop, including a professional kitchen, offices & storage facilities.



To see more images please visit our website:

WWW.PARIS-EPICENTRE.FR



WRITE HISTORY WITH US

PARTNERING

This project is bigger than us, but God is even bigger! We want to see far further than where we are today and carry out this project for the generations to come, for Paris, France, Europe and beyond. We are looking for **intercessors** and **investors** to partner with us in this Kingdom adventure.

To seize this historic opportunity and take our vision to the next level, we need to raise **700 000 euros by the 15th of August 2023**.

Then over the next two years, we hope to raise an additional 3,3 million euros, and obtain a loan of 4 million Euros to enable us to purchase the property.

You can partner with us in making the Paris Epicentre project possible in 2 ways:

- **PRAY WITH US:** subscribe to our newsletter to stay informed and pray more effectively paris-epicentre.fr/newsletter
- **INVEST:** make a donation paris-epicentre.fr/en/donate

Thank you for your support!

For any questions, please feel free to contact us on salut@egliselacite.com





**THANK
YOU**



La Cité – église chrétienne de Paris

33 Avenue de Saxe, 75007, Paris

salut@egliselacite.com

www.egliselacite.com

www.paris-epicentre.fr

Association numéro RNA : W751214034

Identifiant SIREN : 819 932 112

